

M/S SZAFIR



NAME OF SHIP:	SZAFIR
LR/IMO NUMBER:	9004504
LAST PREVIOUS NAME:	SOCOL 5
DATE OF NAME CHANGE/FLAG:	22-02-2011
FLAG:	CYPRUS
IF THE FLAG HAS BEEN CHANGED, WHAT WAS PREVIOUS FLAG?:	MALTA
PORT OF REGISTRY:	LIMASSOL
FLAG STATE REGISTRATION NUMBER (ID):	9004504
CLASSIFICATION SOCIETY:	LR
CLASS ID NO:	9004504
CLASSIFICATION NOTATION:	(+100 1A + LMC UMS)
ICE NOTATION:	1A
BUILDER & COUNTRY WHERE SHIP WAS BUILT:	MIHO ZOSENSHO SHIMIZU (JAPAN)
HULL NO:	1385
DATE KEEL LAID:	1992
DATE DELIVERED:	08-07-1992
CALL SIGN:	5BFC3
TYPE OF SHIP:	GENERAL CARGO
SINGLE OR DOUBLE DECKER:	DOUBLE DECKER VESSEL CONVERTIBLE TO SINGLE DECKER
REGISTERED OWNER:	VOLTAIRE SHIPPING CO. LTD
TECHNICAL / CREWING & OPERATIONS MANAGERS:	EUROAFRICA SHIPPING LINES LTD
COMMERCIAL MANAGERS:	EUROAFRICA SHIPPING LINES LTD

P & I CLUB:	WEST OF ENGLAND
HULL & MACHINERY:	WARTA
ITF STATUS:	SPECIAL AGREEMENT

DIMENSIONS

LENGTH OVERALL (LOA):	113.12
MOULDED BREADTH:	18.90
MOULDED DEPTH / EXTREME DEPTH:	11.28
AIR DRAFT - (KEEL TO MAST):	36

TONNAGE	GROSS	NETT
INTERNATIONAL TONNAGE:	6030	3602
LIGHTWEIGHT:	3668.19	
DISPLACEMENT AT SUMMER DRAFT:	13266.19	

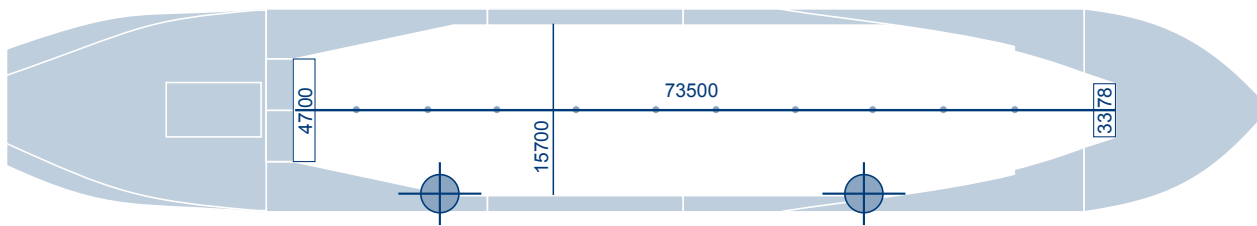
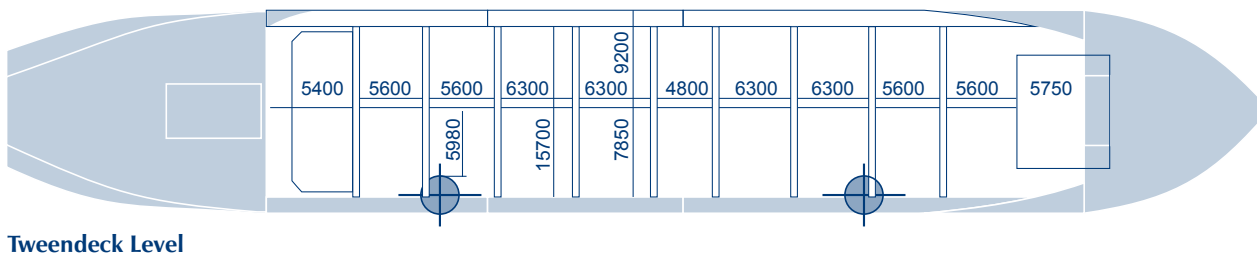
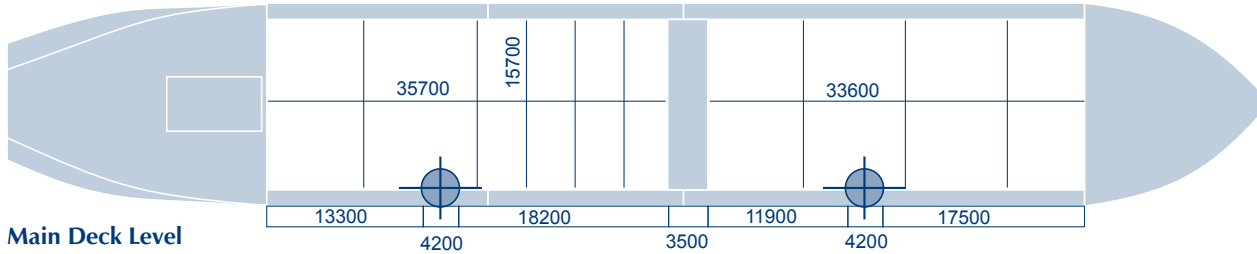
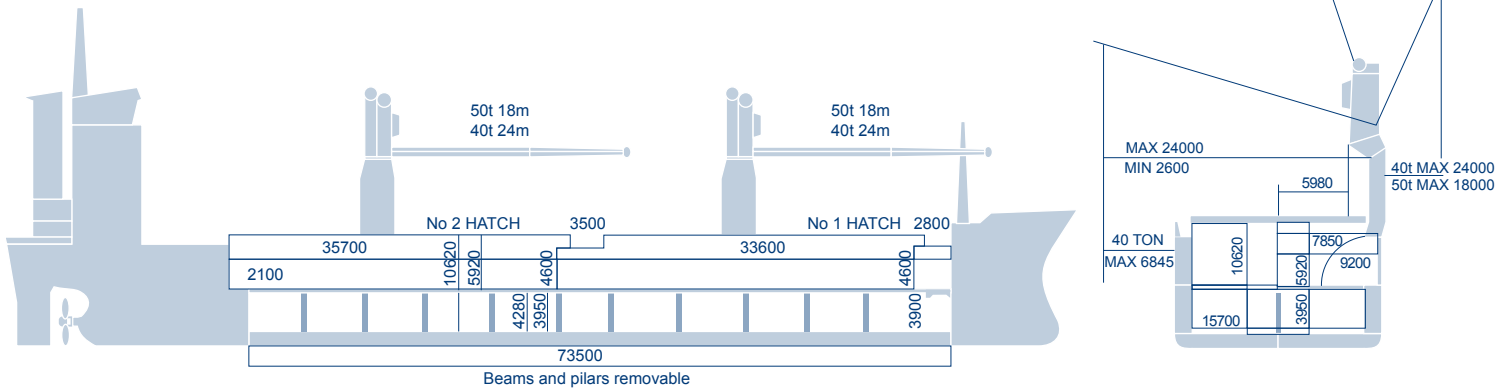
DRAUGHT DEADWEIGHT FREEBOARD	EXTREME DRAUGHT (M)	DWT (MT)	FREEBOARD	TPC
WINTER:	8.363	9267.37	2965	18.46
SUMMER:	8.541	9597.53	2787	18.56

FUEL CONSUMPTION

SPEED (knots)	FUEL CONSUMPTION (t/day)
12.5	14.2
CONS. IN PORT IDLE	1
CONS. IN PORT WORKING	1.5 / 2.0

- NO GAS OIL AT SEA WITH SHAFT GENERATOR WORKING





Lower Hold / Tanktop Level

UP TO 4 SEPARATE BULKHEADS CAN BE INSTALLED AT LH (2) AND TO (2)

CARGO HOLDS / EQUIPMENT

ONE HOLD / TWO TWEENDECK - TWO HATCHES

HOLD / TWEENDECK DIMENSIONS	LOWER HOLD	TWEENDECK	
LENGTH (M):	73.5	74.2	
BREADTH (M):	15.7	18.4	
DEPTH (M):	4.05	6.00	
AREA (M ²):	1001.6	1391	= 2392.6

CAPACITY

	TWEEN DECKER	GRAIN	BALE
TWEENDECK HATCHES CLOSED, (CBM)	TWEEN DECK	7903.88	7436.75
	LOWER HOLD	4678.01	4423.47
	TOTAL	12581.89	11860.22
TWEENDECK HATCHES OPEN, (CBM)	TWEEN DECK	6763.73	6704.51
	LOWER HOLD	4826.84	4823.24
	TOTAL	11590.57	11527.75
TOTAL GRAIN CAPACITY INCLUDING COAMINGS, (CBM)		12581.89	

MAXIMUM PERMISSIBLE DISTRIBUTED LOADS MT / M²

HATCH COVERS (WEATHER DECK):	1.75
TWIN DECK COVERS:	3.70
TANK TOP:	20.0

HATCHWAY DIMENSIONS

		No. 1	No. 2
WEATHER DECK	LENGTH (M):	33.6	35.7
	BREADTH (M):	15.7	15.7
TWEENDECK	LENGTH (M):	70.7	-
	BREADTH (M):	15.7	-
HATCH COVERS (WEATHER DECK):	MACGREGOR, END FOLDING TYPE, EACH COVER OF 4 FLAT STEEL PANELS, HYDRAULIC		
WHERE DO THEY BREAK:	CENTER		
HATCH COVERS (TWEENDECK) Total 11 sections:	FLUSH TYPE, SIDE OPENING WITH CRANE, EXCEPT FIRST SECTION OPENING FWD BY HYDRAULIC		
WHERE DO THEY BREAK:	CENTER		

MECHANICAL VENTILATION

No. OF FANS EACH HOLD [ONE FAN CAPACITY]:	4 [1850 M ³ /MIN]
CAPACITY EACH HOLD (BSS EMPTY HOLDS):	444000 M ³ /HR
TYPE OF VENTILATION:	INVERSIBLE
AIR CHANGES PER HOUR EACH HOLD:	25
AIR CHANGES PER HOUR LOWER HOLD:	25
AIR CHANGES PER HOUR UPPER HOLD:	25